

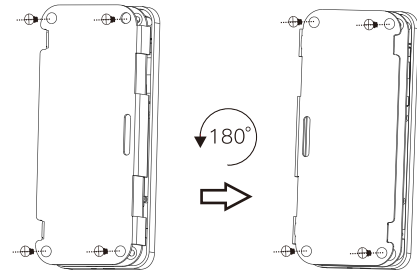
Digital Door Lock AGL 559 XL-C 4609 Installation Manual



dormakaba India Private Limited

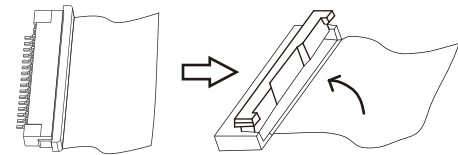
Regd. Office & Factory: Plot No. 48/3, 8th Avenue, Mahindra World City, Anjur Village,
Chengalpattu Dist. Tamil Nadu 603002. service.india@dormakaba.com

How to adjust the direction



1. Remove the screws on both sides of the main lock, remove the rear housing, and then remove the four front housing fixing screws;
2. Separate the U-shaped bracket and the front shell, rotate the bracket 180 and install it back;
3. When the back shell is installed back, it also rotates 180 degrees to complete the left-right exchange.

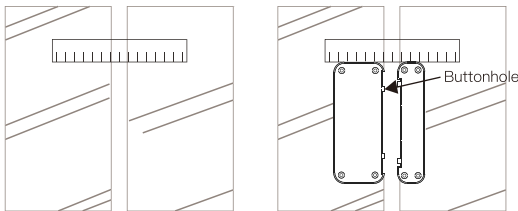
Cable's assemble and disassemble



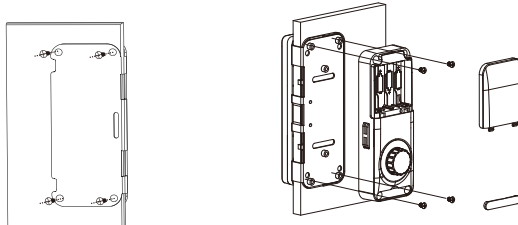
1. When removing the cable, gently pull out the lock to the right with both fingers, and then pull out the cable
2. When replacing the cable, insert the cable first, and then push the lock slightly to the left.

Note: Gently pull and push to prevent the lock from breaking

Installation: frameless glass doors



1. Clean the surface of the glass and stick a horizontal positioning card inside the door
2. Tear off the mounting board tape and attach it to the card position

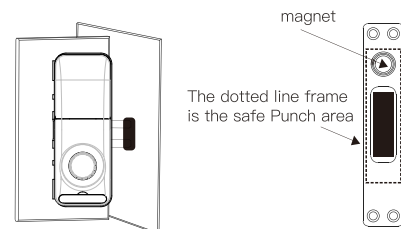


3. Remove the rear shell and row of the main lock, push in from the side, and screw the 4 fixing screws (the same as the operation of the sub-lock)
4. Connect the row wire, and install the main lock back shell, and screw 4 fixed screws on the front side (same as on the operation of sub-lock)

Note:

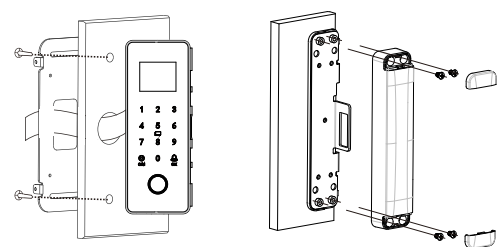
1. Be sure to use a horizontal positioning plate to align the main and secondary locks, and the door seams shall not be less than 4 mm;
2. The thickness of the glass is 10-12mm, which needs to be customized

Installation: single-glass door



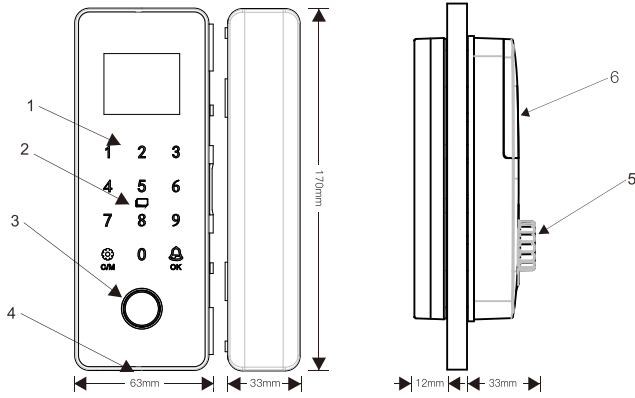
1. Press the previous page install the main lock, close the door and mark the lock tongue position
2. The wall is perforated with a side bar; note that the magnet orientation should be consistent with the main lock knob (shown above)

Installation: Framed glass doors



1. The main lock is perforated according to the size, the front panel passes through the stud and wire, the front plate
2. The auxiliary lock is directly fixed on the metal plate with self-tapping screws or rivets, and then installed on the rear housing. Note: the secondary lock has only the rear housing

Functional structure diagram



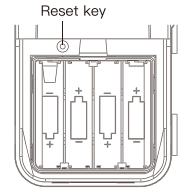
- 1 Keyboard
- 2 Verify card
- 3 Fingerprint
- 4 USB power port
- 5 Battery compartment
- 6 Rotary knob

Scramble PIN Code

Anti-peeping password recognition system, support up to 16 bits of virtual password (real password 6-8 bits). If the actual password is 88888, you can enter "123458888854321 ok" to verify the unlock

Normally open mode

The normal mode of the device is closed by default. When you need to open the normal mode, just press any key to activate the panel, and then press 9 OK to open the normal mode (cancel the automatic lock function). Press 0 OK to close the open mode (restore automatic lock).



Schematic diagram of battery box

Restore to factory state

As shown in the figure on the right, open the battery cover and press the reset key with a toothpick for more than 5 seconds.

Technical Parameter

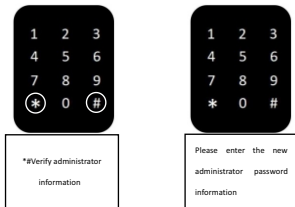
- Unlocking mode:** AIDO Smart / fingerprint / password / swipe card
- Fingerprint type:** semiconductor fingerprint sensor
- Recognition speed:** 0.5s
- Recognition error:** ≤ 0.0001%
- User capacity:** 50
- Remote control capacity:** 36 (optional for remote control)
- Working temperature:** - 25 °C - 65 °C
- Working humidity:** 5 ~ 95% RH (no condensation)
- Working power supply:** 4 1.5V 5 AA alkaline dry batteries
- Emergency power supply:** Micro USB (Micro-usb interface)
- Power current:** static ≤ 50ua, dynamic ≤ 200ma
- Scope of application:** 8-12mm frameless glass door (door seam size 4-15mm)
30-120mm framed glass door / wooden door

Door lock standalone operation: Add user

1. Door lock single machine operation instruction

Door lock standalone operation, the first three are to add administrator information, and then add regular user information.

Door lock standalone operation User information cannot be deleted unless the factory settings are restored. Simply add one administrator information and other unlocking information can be added using the APP for easier addition and deletion of user information



APP connection operation instructions

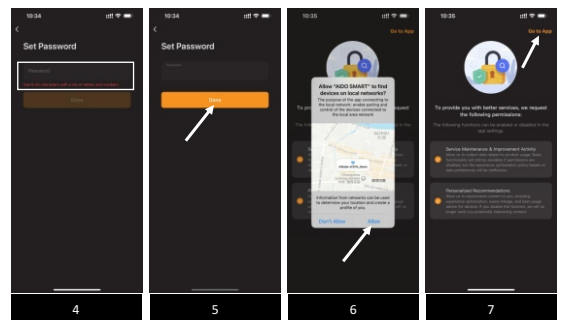
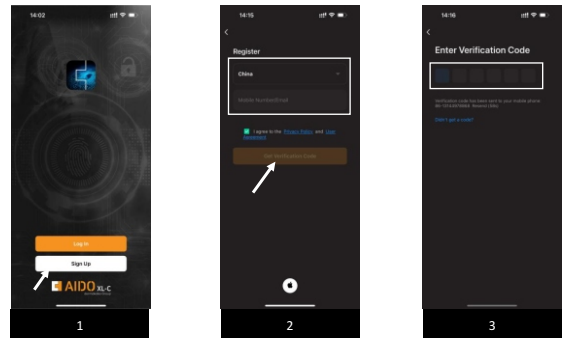
1. Download the APP

Please scan the code or search for the name to download the APP

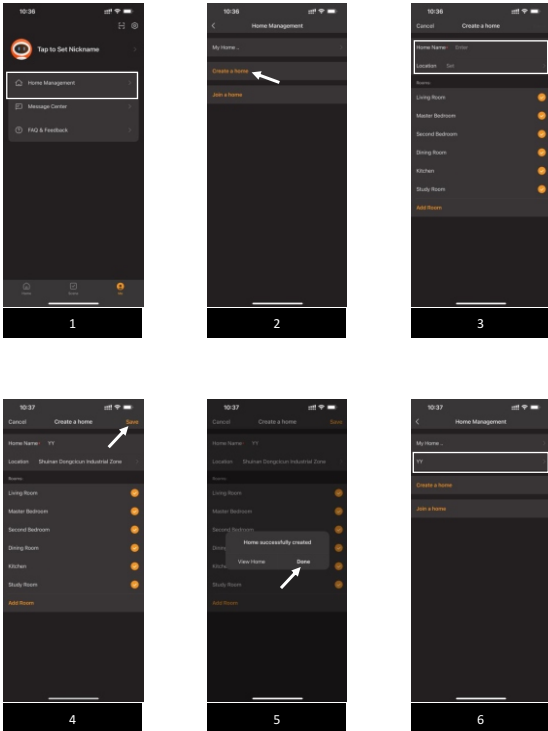


- Application for unlocking mode
- 1. APP unlocking: effective range within 15 meters
- 2. Temporary password unlocking

2. Install the app, register and log in

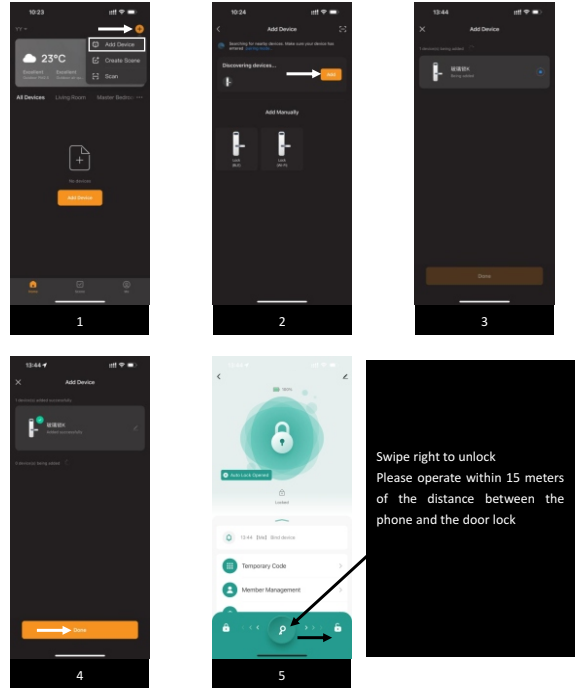


3.establish a home



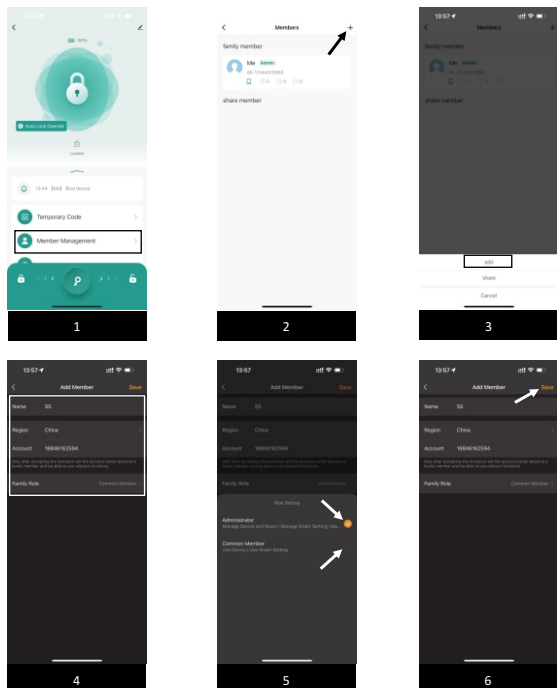
4.Connect door lock AIDO smart

Attention This lock is (AIDO Bluetooth), and the phone needs to turn on Bluetooth to connect. If you cannot connect, please reset the lock to factory settings and try again. Please keep the distance between the APP mobile phone and the door lock within 15 meters when connecting



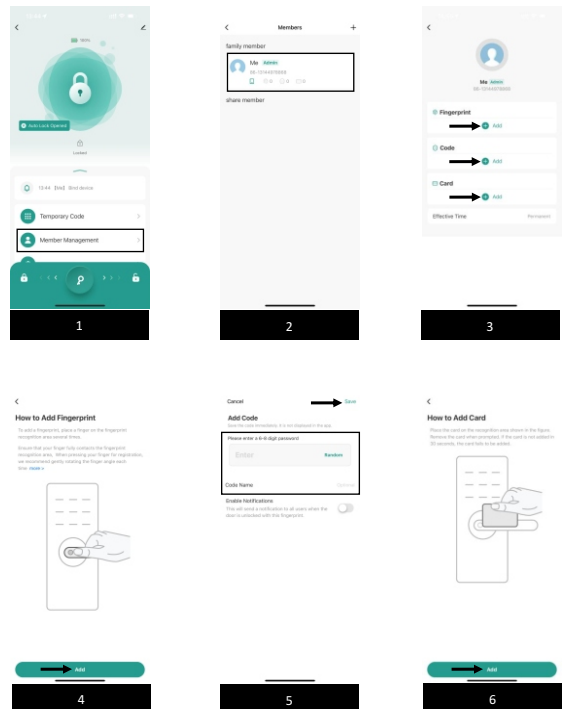
5.Add APP members

There are two roles for adding APP users: (APP administrator) and (APP ordinary user)
 APP administrator permissions: can control all operation permissions
 Ordinary APP users: can only unlock
 Firstly, users need to download the app on their mobile phones to register and log in before they can be added



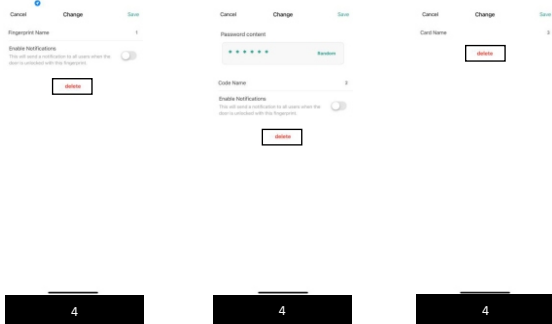
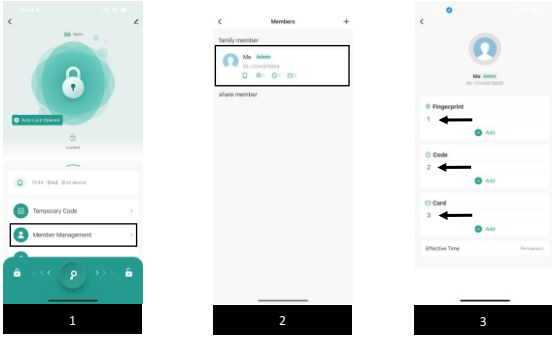
6.Add user: fingerprint/card/password

Please operate within 15 meters of the distance between the phone and the door lock



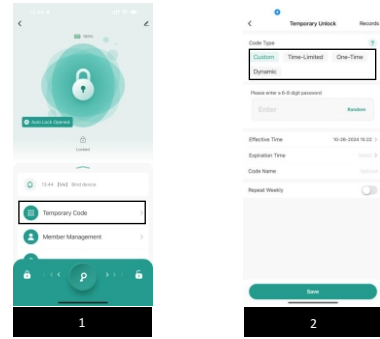
7.Delete user: fingerprint/card/password

Please operate within 15 meters of the distance between the phone and the door lock



8.Get temporary password

The temporary passwords are: (custom password) (time limited password) (single unlock password) (dynamic password) optional



9.Restore factory se

Please operate within 15 meters of the distance between the phone and the door lock

